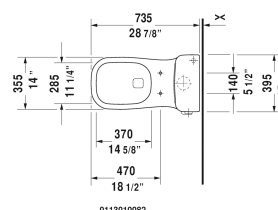
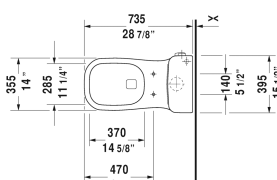
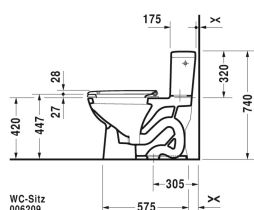
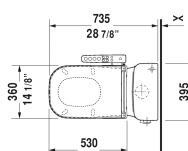


## D-Code One-Piece toilet # 011301..01 / 011301..82

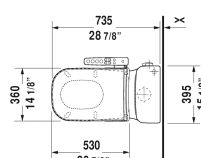
| < 15 1/2" Inch > |



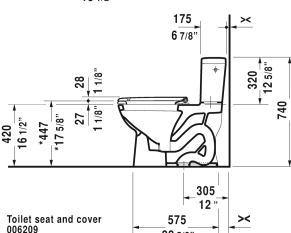
0113010082



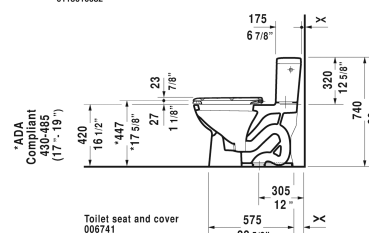
0113010082



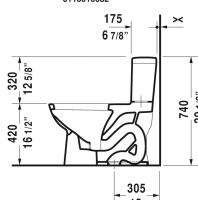
\*ADA  
Compliant  
430-485  
(17\"/>



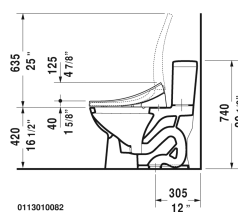
Toilet seat and cover  
006209



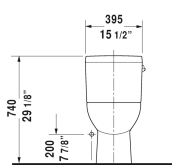
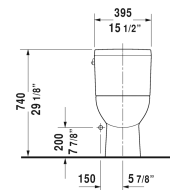
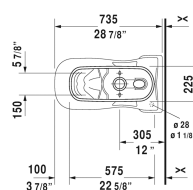
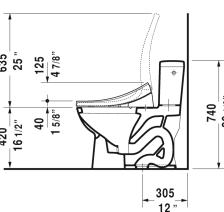
Toilet seat and cover  
006741



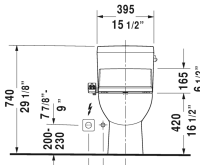
0113010082



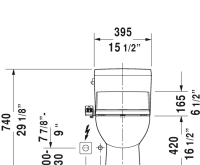
0113010082



0113010082



0113010082



One-Piece toilet	Dimension	Weight	Order number
syphonic, 12" rough-in, vertical outlet, cUPC listed, 1.28 gpf			
Colors			
00 White 20 HygieneGlaze (an antibacterial ceramic glaze that provides almost indefinite effectiveness)			
Variant			
• with Single Flush mechanism with side lever left	15 1/2" x 28 7/8" Inch	87 lb	011301..01
• with Single Flush mechanism with side lever right	15 1/2" x 28 7/8" Inch	87 lb	011301..82
Mounting set for One-Piece and Two-Piece toilets, outlet 3/8" - male thread, wall connection 1/2" - female thread, 1/2", North American version			
	15" Inch	1.1 lb	001431

**D-Code One-Piece toilet # 011301..01 / 011301..82****|< 15 1/2" Inch >|****Suitable products**

Toilet seat and cover elongated, hinges stainless steel, without slow close,

006741

Toilet seat and cover elongated, hinges stainless steel, removable, with slow close,

006209

*All drawings contain the necessary measurements which are subject to standard tolerances. They are stated in inch & mm and are non-binding. Exact measurements, in particular for customized installation scenarios, can only be taken from the finished ceramic piece.*